

## Rektum Kanseri Distal Tümörlerde İzle/Gör Ne Derece Gerçekçi?



26 Şubat 2022  
Dursun Buğra



Operative Versus Nonoperative Treatment for Stage 0  
Distal Rectal Cancer Following Chemoradiation Therapy  
Long-term Results

(Ann Surg 2004;240: 711-718)

- Neoadjuvan RT + KT
- Klinik tam yanıt + takip
- vs
- TME + patolojik tam yanıt
- Genel sağ kalım farkı yok



Operative Versus Nonoperative Treatment for Stage 0  
Distal Rectal Cancer Following Chemoradiation Therapy  
Long-term Results

(Ann Surg 2004;240: 711-718)

- Orta/distal rektal kanser tedavisinde paradigma değişikliği
- Angelita Habr-Gama



Londra 2018



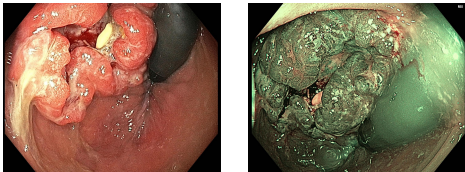
## Klinik tam yanıt kriterleri

- Rektal tuşede kitle yok
- Rektoskopide tümörün yerinde
  - Beyaz, telanjiektazi içeren düz nedbe dokusu var
  - Ülser ya da nodüler doku yok
  - Biyopsi???
- T2 ağırlıklı MR'da
  - Duvarda tümörün yerinde siyah sinyal var (fibrozis)
  - Mezorektumda patolojik lenf d. yok
- Difüzyon ağırlıklı MR'da
  - Sinyal kısıtlaması yok
- PET-BT'de tutulum yok???

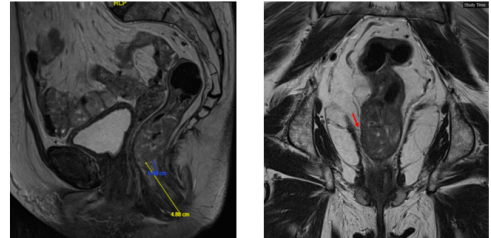


## S.A. (60y, K), Kasım 2018

- Fizik muayene: Anal girimden itibaren 4. cm'de alt ucu hissedilen kitle
- Kolonoskopi: Adenokarsinom



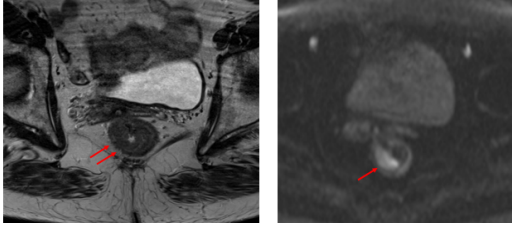
## S.A. (60y, K) Kasım 2018



T3b, EMVI, metastatik lenf d., CRM tutulumu yok



S.A. (60y, K) Kasım 2018



T3b, EMVi, metastatik lenf d., CRM tutulumu yok

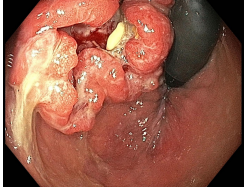


S.A. (60y, K)

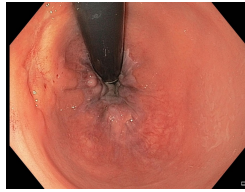
- Kasım 2018 - Ocak 2019 arası uzun dönem RT + KT
- Ocak 2019 - Mart 2019 arası 4 kür XELOX
- Nisan 2019 kontrol
  - **Toraks BT:** Metastaz saptanmadı.



S.A. (60y, K)



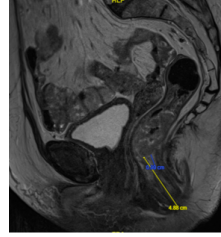
Kasım 2018



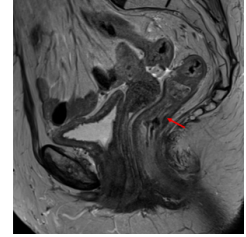
Nisan 2019



S.A. (60y, K)



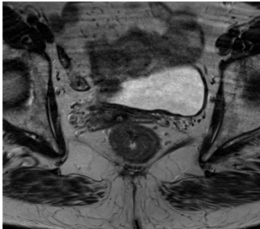
Kasım 2018



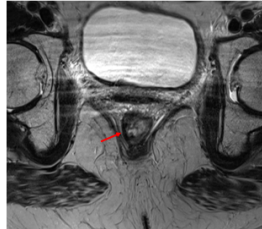
Nisan 2019



S.A. (60y, K)



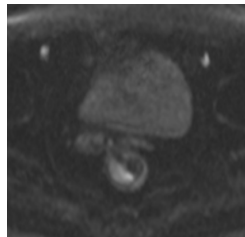
Kasım 2018



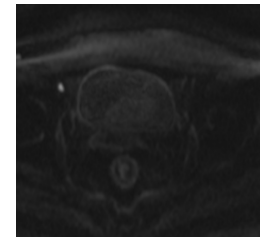
Nisan 2019



S.A. (60y, K)



Kasım 2018



Nisan 2019



## ANKET: Ne yapalım?

- TME
  - Sfinkter koruyucu girişim
  - Abdominoperineal rezeksiyon
- Organ koruyucu yaklaşım
  - Transanal lokal eksizyon
  - Bekle ve takip et



## Biz ne yaptık?

- TME
  - Sfinkter koruyucu girişim
  - Abdominoperineal rezeksiyon
- Organ koruyucu yaklaşım
  - Transanal lokal eksizyon
  - **Bekle ve takip et**

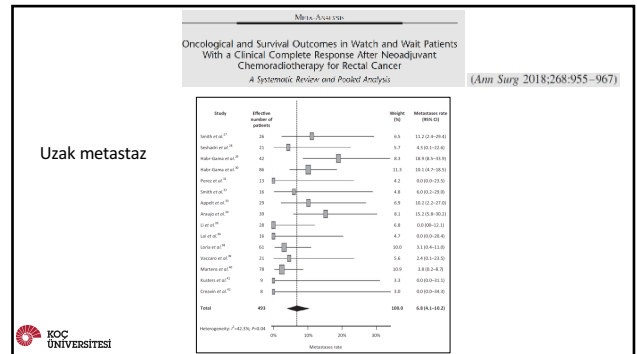
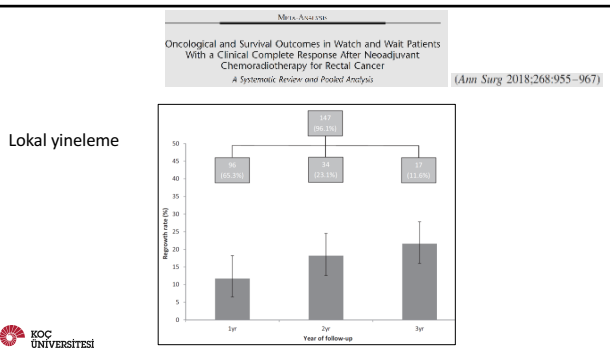


## S.A. (60y, K)

- Yaklaşık 3 yıllık takip
- Pelviste tümör yinelemesi yok
- Sistemik metastaz yok

## Bekle ve takip et GERÇEKÇİ BİR YAKLAŞIM mıdır???

- Onkolojik sonuçlar
  - Rektum duvarında ve/veya mezorektumda yineleme
  - Uzak organ metastazi
  - Genel ve hastaliksız sağkalım
- Fonksiyonel sonuçlar



## International Watch and Wait Database (IWWD)

|                    | Total number of patients (N=898) | Instituto Angelita e Joaquim Gama, Sao Paulo, Brazil (n=192) | Antoni van Leeuwenhoek and Maastricht University Medical Center, Netherlands (n=239) | Oncore research database, UK (n=149) | Other participating institutes (n=318) |
|--------------------|----------------------------------|--|--|--------------------------------------|--|
| Local regrowth     |                                  |  |  |                                      |  |
| Yes                | 213 (24%)                        | 70 (37%)   | 35 (15%)   | 59 (40%)                             | 49 (16%)                               |
| No                 | 667 (76%)                        | 122 (64%)  | 204 (85%)  | 90 (60%)                             | 251 (84%)                              |
| Distant metastasis |                                  |  |  |                                      |  |
| Yes                | 71 (8%)                          | 27 (14%)   | 9 (4%)   | 14 (9%)                              | 21 (7%)                                |
| No                 | 809 (92%)                        | 165 (86%)  | 230 (96%)  | 135 (91%)                            | 279 (93%)                              |

## International Watch and Wait Database (IWWD)

|                    | Total number of patients (N=898) | Instituto Angelita e Joaquim Gama, Sao Paulo, Brazil (n=192) | Antoni van Leeuwenhoek and Maastricht University Medical Center, Netherlands (n=239) | Oncore research database, UK (n=149) | Other participating institutes (n=318) |
|--------------------|----------------------------------|--|--|--------------------------------------|--|
| Local regrowth     |                                  |  |  |                                      |  |
| Yes                | 213 (24%)                        | 70 (37%)   | 35 (15%)   | 59 (40%)                             | 49 (16%)                               |
| No                 | 667 (76%)                        | 122 (64%)  | 204 (85%)  | 90 (60%)                             | 251 (84%)                              |
| Distant metastasis |                                  |  |  |                                      |  |
| Yes                | 71 (8%)                          | 27 (14%)   | 9 (4%)   | 14 (9%)                              | 21 (7%)                                |
| No                 | 809 (92%)                        | 165 (86%)  | 230 (96%)  | 135 (91%)                            | 279 (93%)                              |

Memorial Sloan Kettering Kanser Merkezi  
Onkolojik Sonuçlar

- Ocak 2006 – Ocak 2015
- 136 hasta TME, patolojik tam yanıt
- 113 hasta klinik tam yanıt, bekle ve takip et
- **Patolojik tam yanıt (136 olgu)**
  - Pelvik nüks yok
- **Bekle ve takip et (113 olgu)**
  - 22 olguda duvarda yineleme
    - 20 TME
    - 2 lokal eksizyon
  - 93 hastada (% 82) rektum korundu

Memorial Sloan Kettering Kanser Merkezi  
Onkolojik Sonuçlar

- Ocak 2006 – Ocak 2015
- 136 hasta TME, patolojik tam yanıt
- 113 hasta klinik tam yanıt, bekle ve takip et
- **Beş yıl genel sağkalım**
  - Patolojik tam yanıt % 94
  - Bekle ve takip et % 73
- **Beş yıl hastalıksız sağkalım**
  - Patolojik tam yanıt % 92
  - Bekle ve takip et % 75

## Danimarka

Long-Term Patient-Reported Outcomes After High-Dose Chemoradiation Therapy for Hemispherical Management of Rectal Cancer

Int J Radiation Oncol Biol Phys. Vol. 106, No. 3, pp. 506-503, 2020

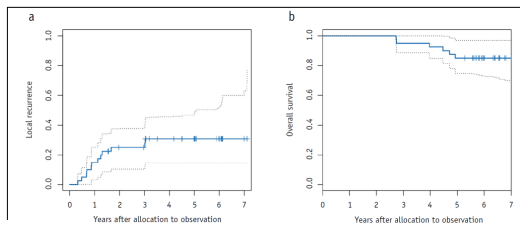
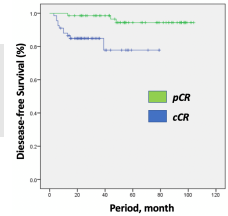
İstanbul Tıp F., Koç Ü.H., Amerikan H.  
01 Ocak 2014 - 31Ekim 2019

Table 2 Clinical outcomes of NOM and pCR patients

|                               | NOM (n=67) | p CR (n=69) | p-value      |
|-------------------------------|------------|-------------|--------------|
| Disease-free survival (month) |            |             |              |
| Local regrowth/recurrence     | 10 (15%)   | 0           | <b>0,004</b> |
| Distant metastasis            | 2 (3%)     | 3 (4,3%)    | 0,424        |



## IWWD, Ne zamana kadar takip gerekli?

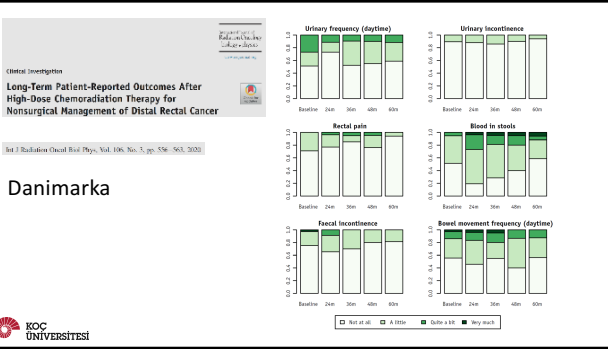
- Klinik tam yanıt sonrası lokal yinleme riskinden arınmış olma ihtimali
  - Bir yıl % 88.1
  - Üç yıl % 97.3
  - Beş yıl % 98.6
- Klinik tam yanıt sonrası uzak metastaz riskinden arınmış olma ihtimali
  - Bir yıl % 93.8
  - Üç yıl % 97.8
  - Beş yıl % 96.6

## Organ Preservation in Rectal Cancer (OPRA)

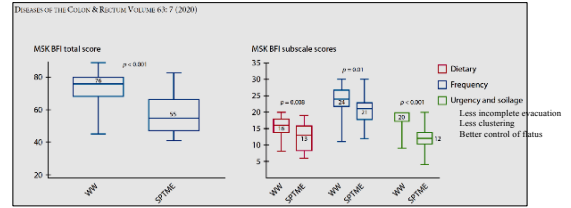
**Table 2**  
Long-term surveillance in the OPRA Organ Preservation in Rectal Adenocarcinoma

| Examination or measure | Months after treatment |      |       |       |                 |                 |                 |                 |                 |                 |
|------------------------|------------------------|------|-------|-------|-----------------|-----------------|-----------------|-----------------|-----------------|-----------------|
|                        | 3-6                    | 9-12 | 15-18 | 21-24 | 30 <sup>a</sup> | 36 <sup>a</sup> | 42 <sup>a</sup> | 48 <sup>a</sup> | 54 <sup>a</sup> | 60 <sup>a</sup> |
| History and physical   | ✓                      | ✓    | ✓     | ✓     | ✓               | ✓               | ✓               | ✓               | ✓               | ✓               |
| Endoscopy              | ✓                      | ✓    | ✓     | ✓     | ✓               | ✓               | ✓               | ✓               | ✓               | ✓               |
| MRI rectum             | ✓                      | ✓    | ✓     | ✓     | ✓               | ✓               | ✓               | ✓               | ✓               | ✓               |
| CT CAP                 | —                      | ✓    | —     | —     | ✓               | —               | ✓               | —               | ✓               | —               |
| CEA                    | ✓                      | ✓    | ✓     | ✓     | ✓               | ✓               | ✓               | ✓               | ✓               | ✓               |

Abbreviations: CAP, chest, abdomen, pelvis; CEA, carcinoembryonic antigen.  
<sup>a</sup>±30 d.  
From Yoval et al. 2020, J. Gastrointest. Surg. 24:1880-1888; with permission.



## Memorial Sloan Kettering Kanser Merkezi Bağırsak işlevleri verisi




## Sonuç I

- Rektum cerrahisi
  - Morbidite ve mortalite
  - Anastomoz kaçaklı olgularda onkolojik sonuçlar kötü
  - TME yaşam konforunu olumsuz etkiliyor (LARS)
  - Geçici ileostomiye özgü komplikasyonlar
  - Sfinkter koruyucu cerrahiden kalıcı stomaya dönüş olasılığı
- Neoadjuvan tedavi bulguları hasta ile paylaşılmalı
- Ameliyat veya bekle ve takip et kararı aşamasında hasta aydınlatılmalı



## Sonuç II

- Bekle ve takip et
  - Onkolojik sonuçlar TME grubundan çok farklı değil
  - Kurtarma cerrahisinin onkolojik sonuçları primer TME'den farklı değil
  - Fonksiyonel sonuçlar TME grubundan daha iyi
- Tam yanıt kararı
  - Deneyimli ekip ve merkez
  - Multidisipliner yaklaşım ve eğitim şart
- Bekle ve takip et yöntemi seçilmiş hasta grubunda tercih edilebilir
- Sorunun yanıtı: **Bekle ve takip et GERÇEKÇİ BİR YAKLAŞIMDIR**





All truth passes through three stages.  
First, it is ridiculised.  
Second, it is violently opposed.  
Third, it is accepted as being self-evident.

Arthur Schopenhauer  
1788-1860




All truth passes through three stages.  
First, it is ridiculised.  
Second, it is violently opposed.  
Third, it is accepted as being self-evident.

Arthur Schopenhauer  
1788-1860



All truth passes through three stages.  
First, it is ridiculised.  
Second, it is violently opposed.  
Third, it is accepted as being self-evident.

Arthur Schopenhauer  
1788-1860



Teşekkürler



Buluşmak ümidiyle

